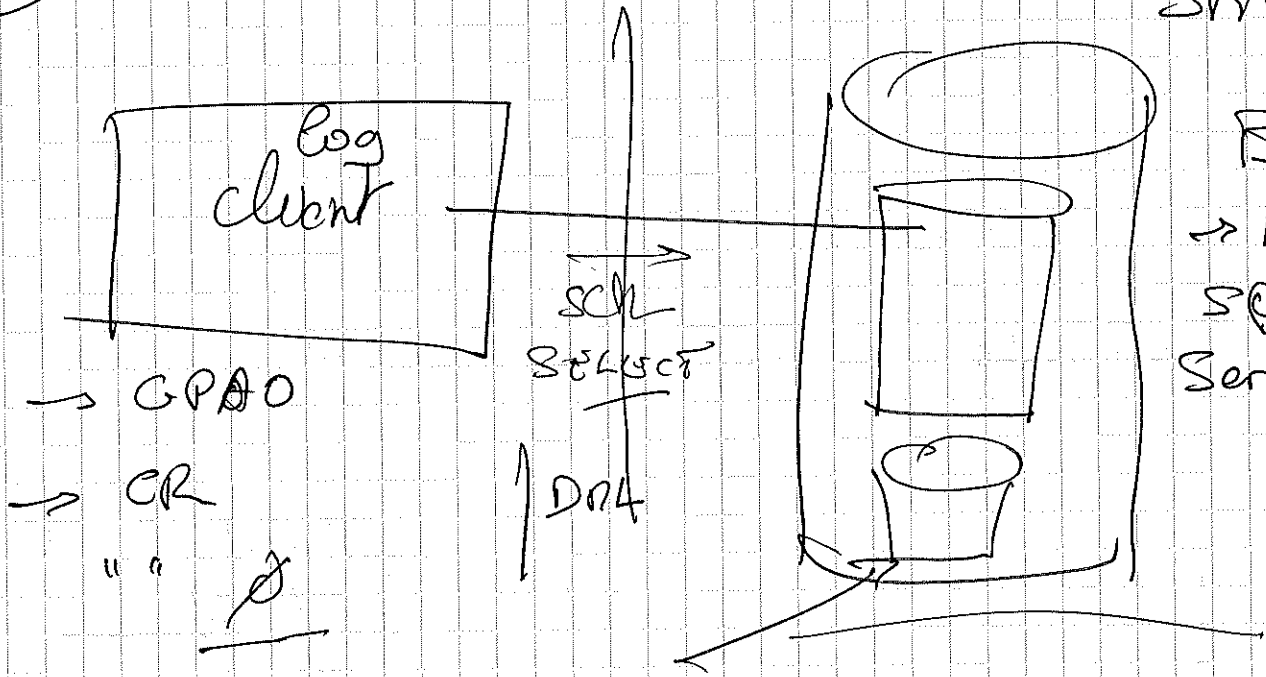


1

# client / serveur

SRM de  
BDD  
→ Microsoft  
SQL  
Server

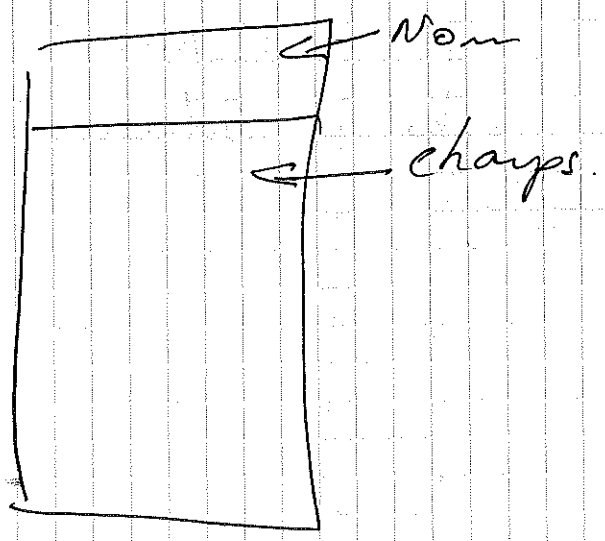
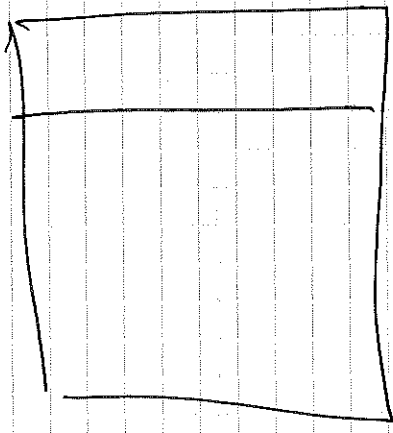


1..n Base de données.  
↳ 1..n tables, etc...  
(objets).

- Conteneur de table

- orienté vers 1 rôle

Table = rôle



2

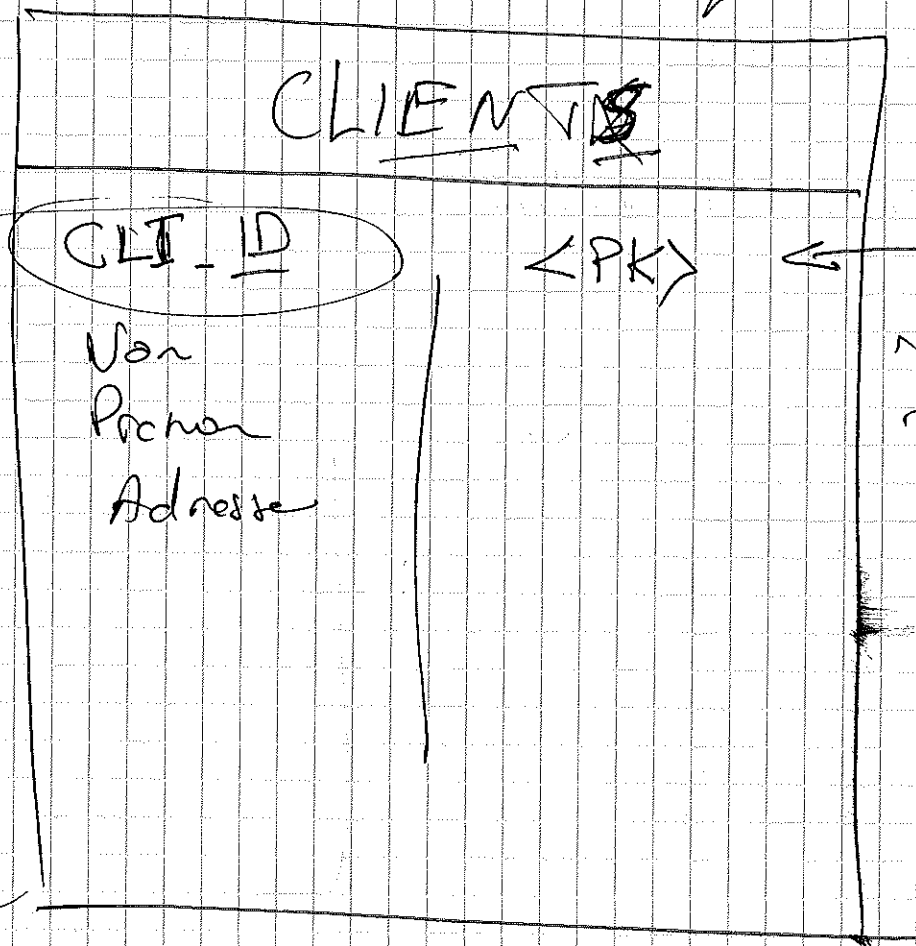


PRIMARY KEY  
clé Primaire

→ "non clé"

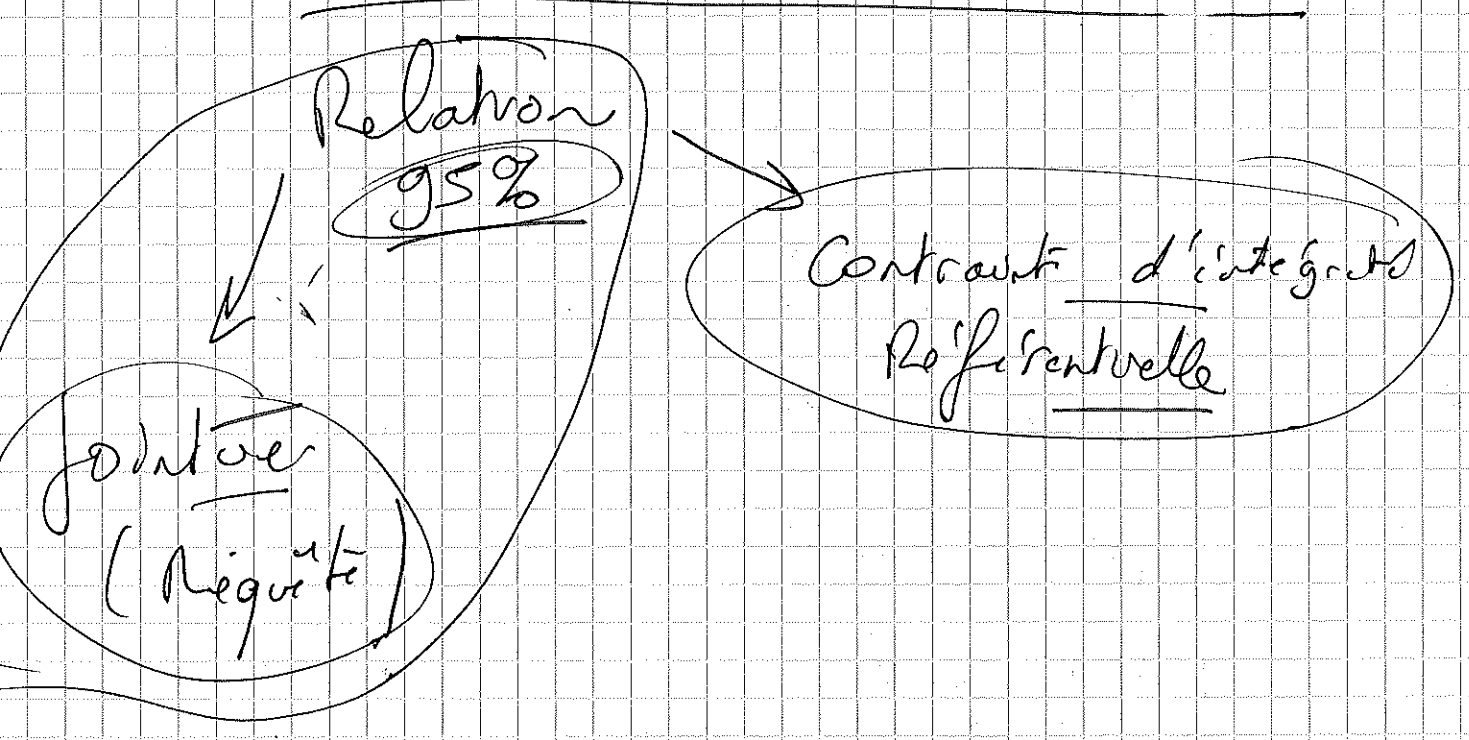
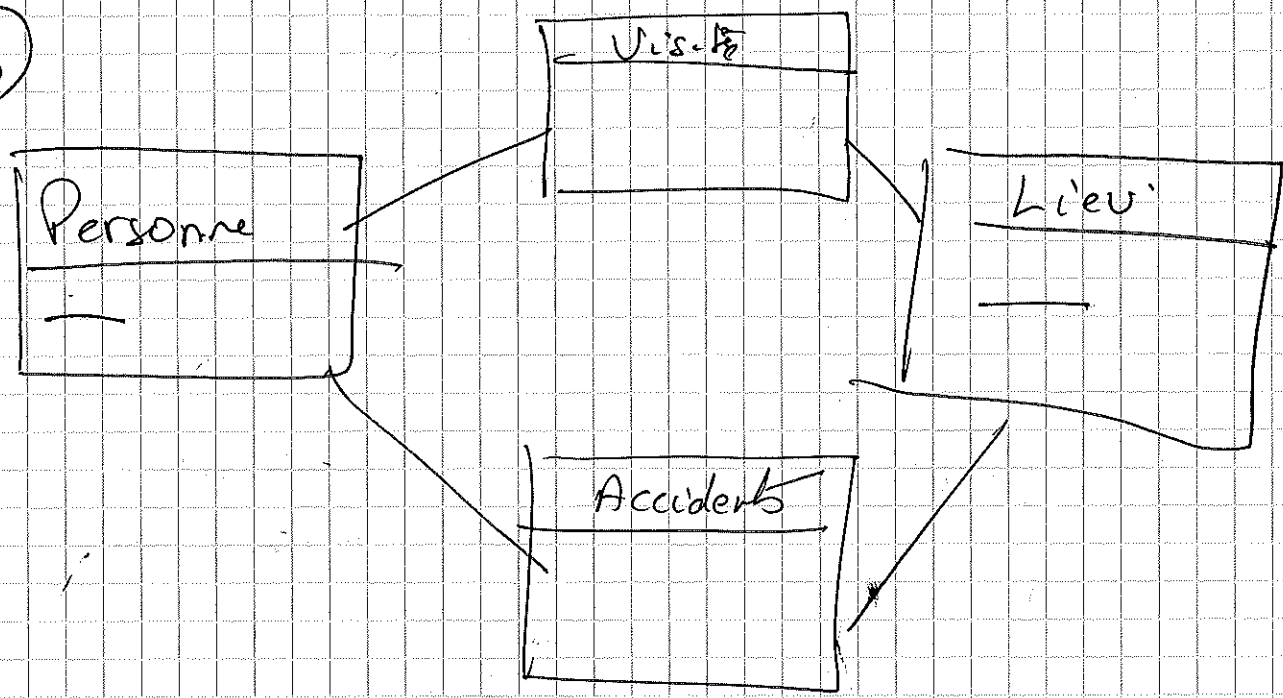
UNIQUE

Caractéristiques



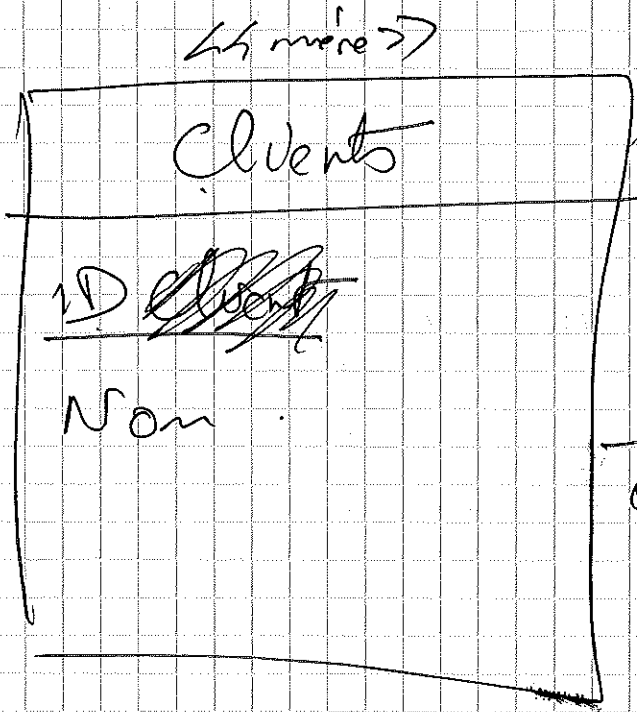
A  
A

(3)



4

min:	0	0..1
	1	1..1
max:	1	0..n
	n	1..n

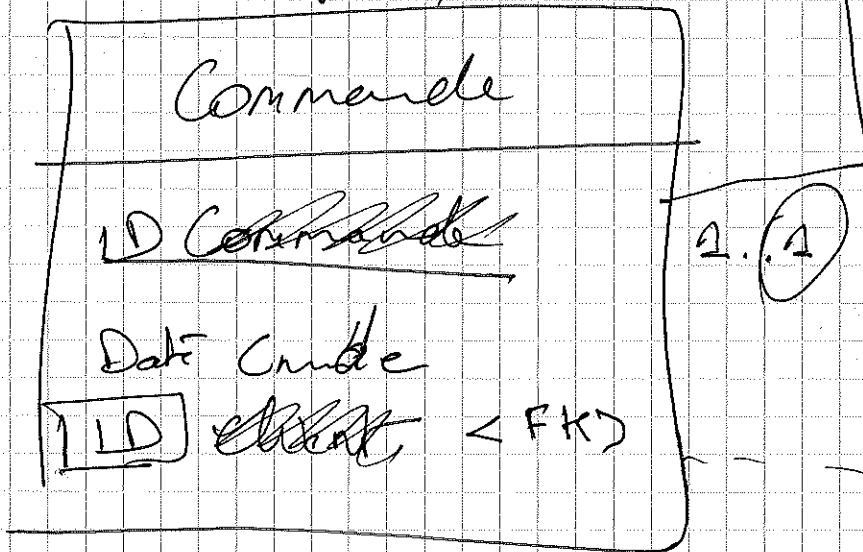


cardinalite  
[min..] maximum

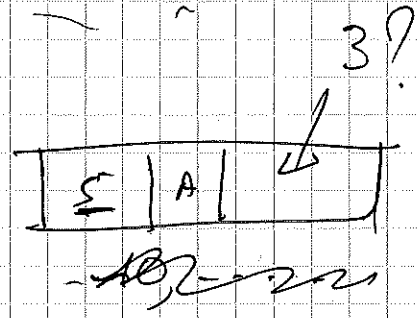
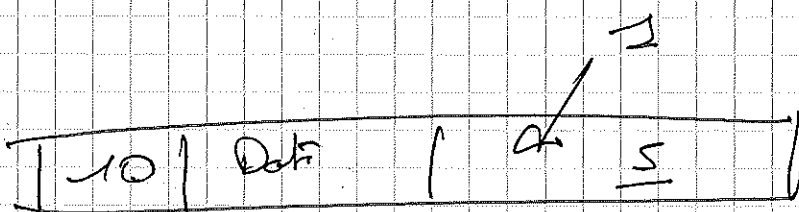
0..(n)

P/K  
ID  
 Code

←> full >



1..(1)



5

class	
1	A
2	B
3	C

Cde	
1	1
2	3
<del>3</del>	<del>1</del>
<del>3</del>	<del>2</del>

SQL

→ INSERT

→ DELETE

→ UPDATE

6

# Exercice

## Faire un schéma

Ecole

→ Prof.

→ Elèves

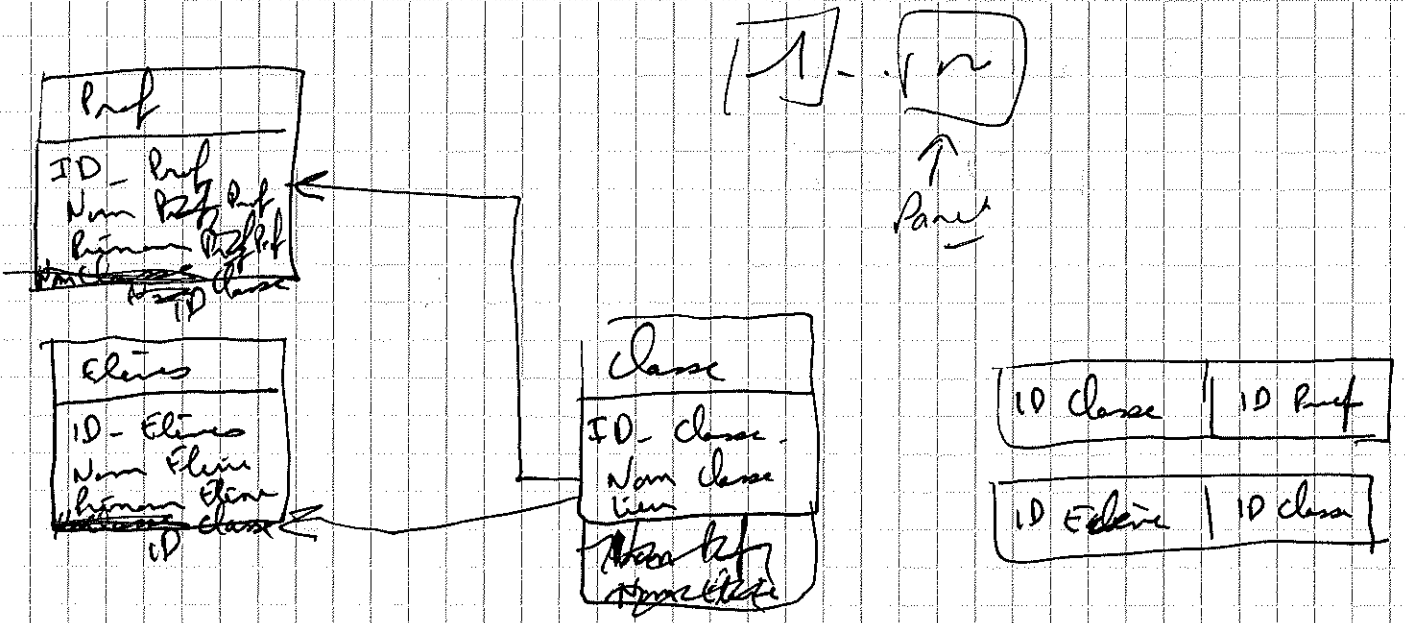
→ classes

→ Quel Prof est dans quelle classe

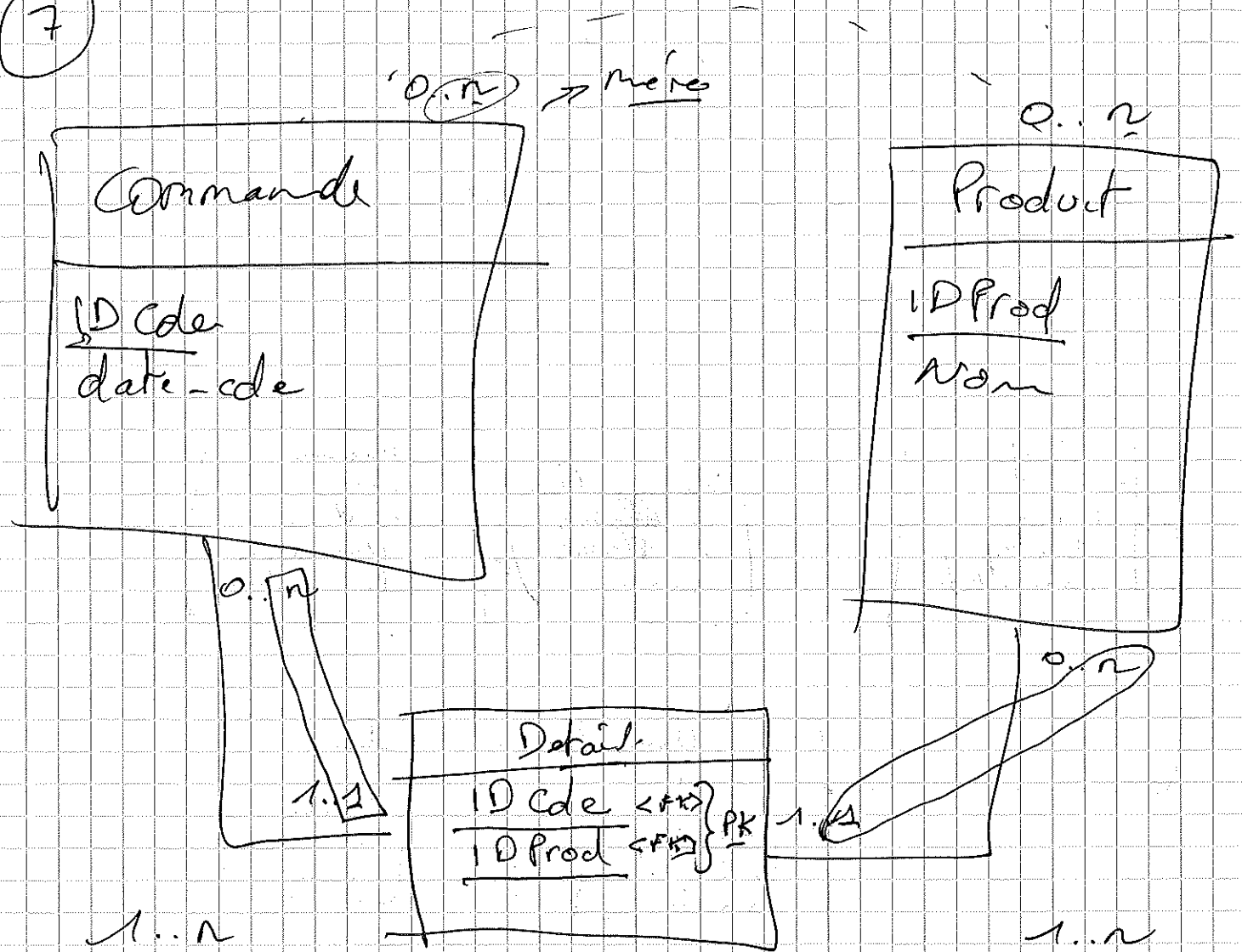
( 1 prof → 1 classe )

1 classe → n élèves.

1 élève → 1 classe )

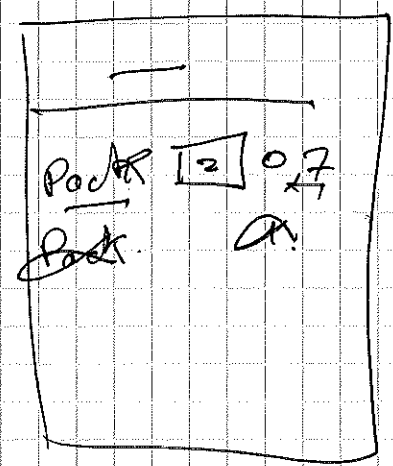
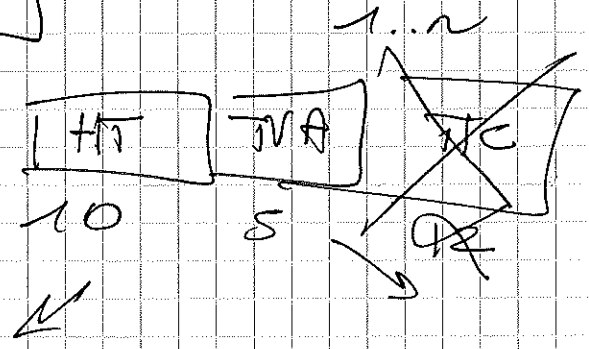


7



1..n

"Table de relation"



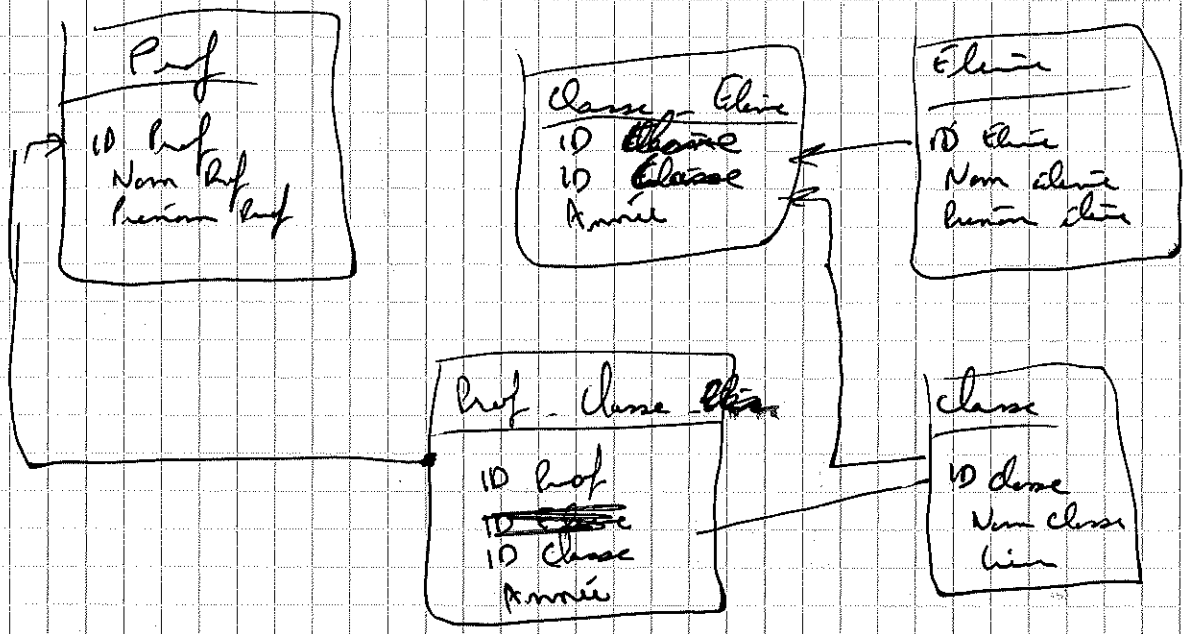
Idc	IDP
1	1
1	2
2	1
2	2

8

1 Prof  $\rightarrow$  n classes

1 élève  $\rightarrow$  n classes

$\rightarrow$  schéma?

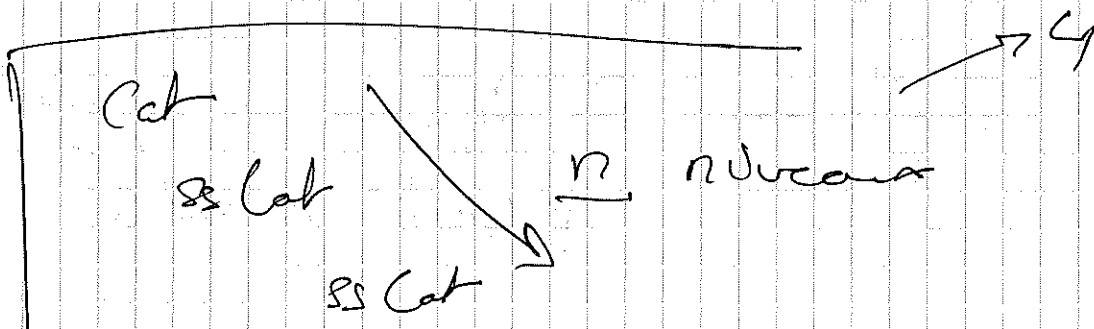
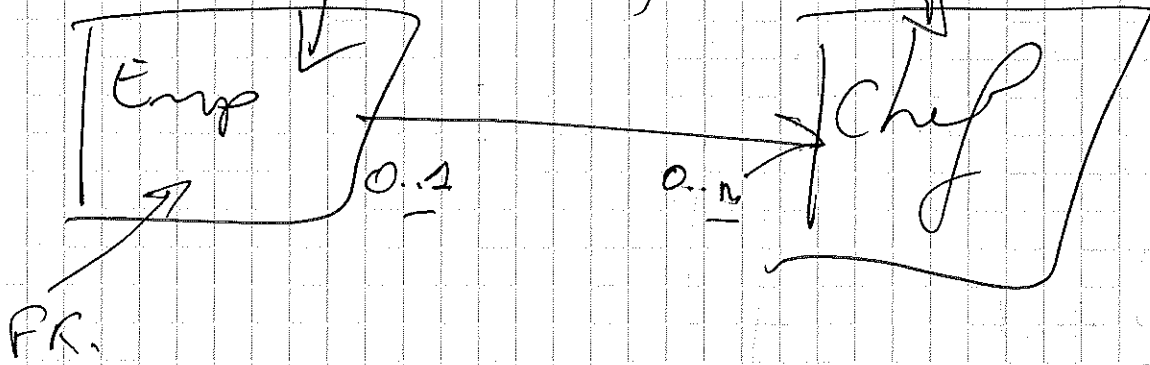




9

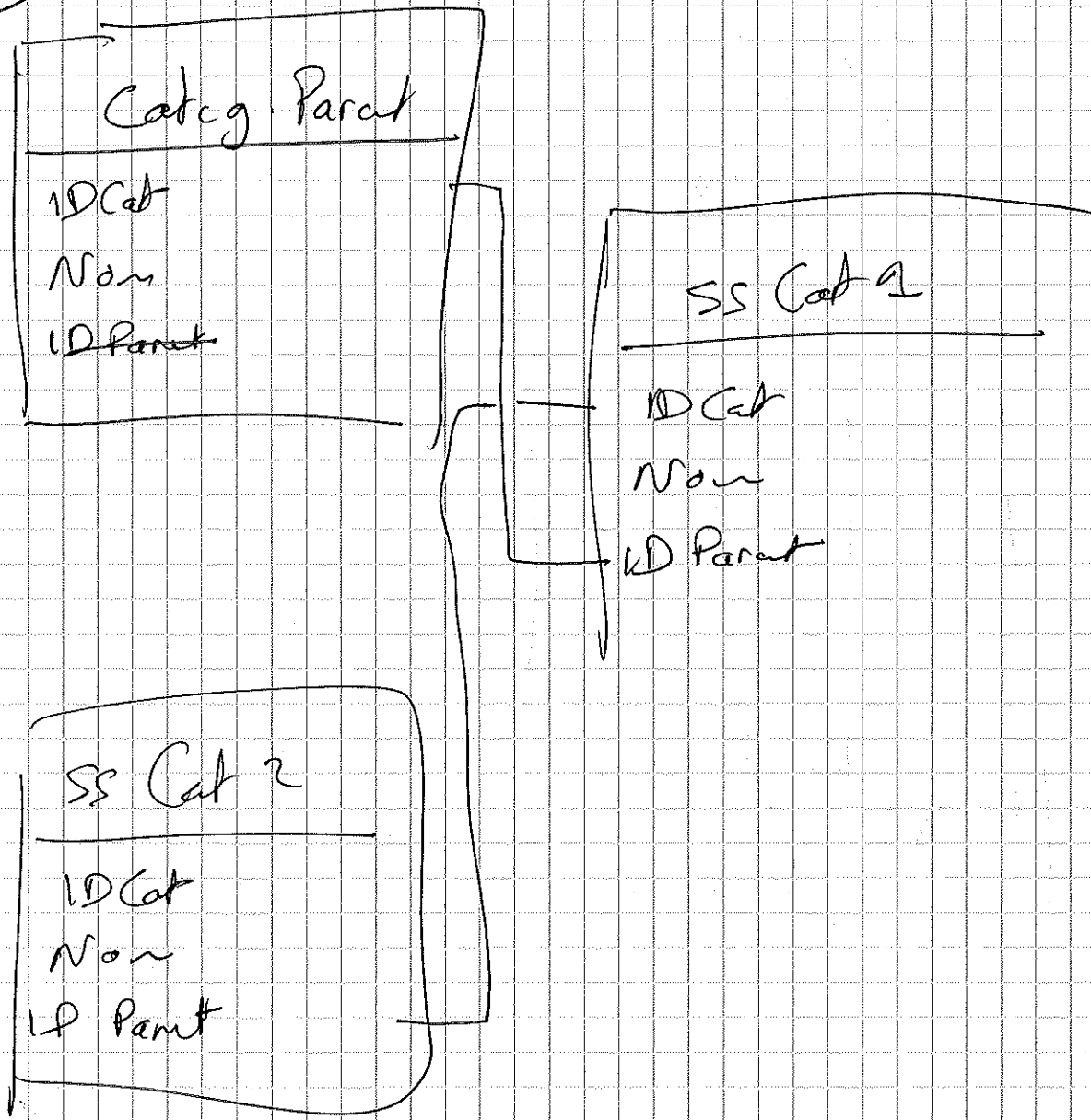
Employee		
<u>ID E</u>	Nome	ID Chef
1	X	
2	Y	
3	Z	

← Data



Cat	
<u>ID Cat</u>	ID Cat Parent
1	Null
2	1
3	1
4	2

10



Si Profondeur Pré définie → Crystal Reports n Tables.

Si Profondeur non limitée → Passer par du SQL Spécifique au serveur.

→ Connaissance globale du schéma.

→ Compréhension notion Table

→ PK.

→ FK.

→ Relations -

→ Contraintes d'int

→ jointures -

→ CR → Afficher contenu d'une table

→ R/W Table (jointures)

→ Groupes / Calculs.

→ Filtes - / groupes -

→ FQ -

→ Aff. conditionnel.

